

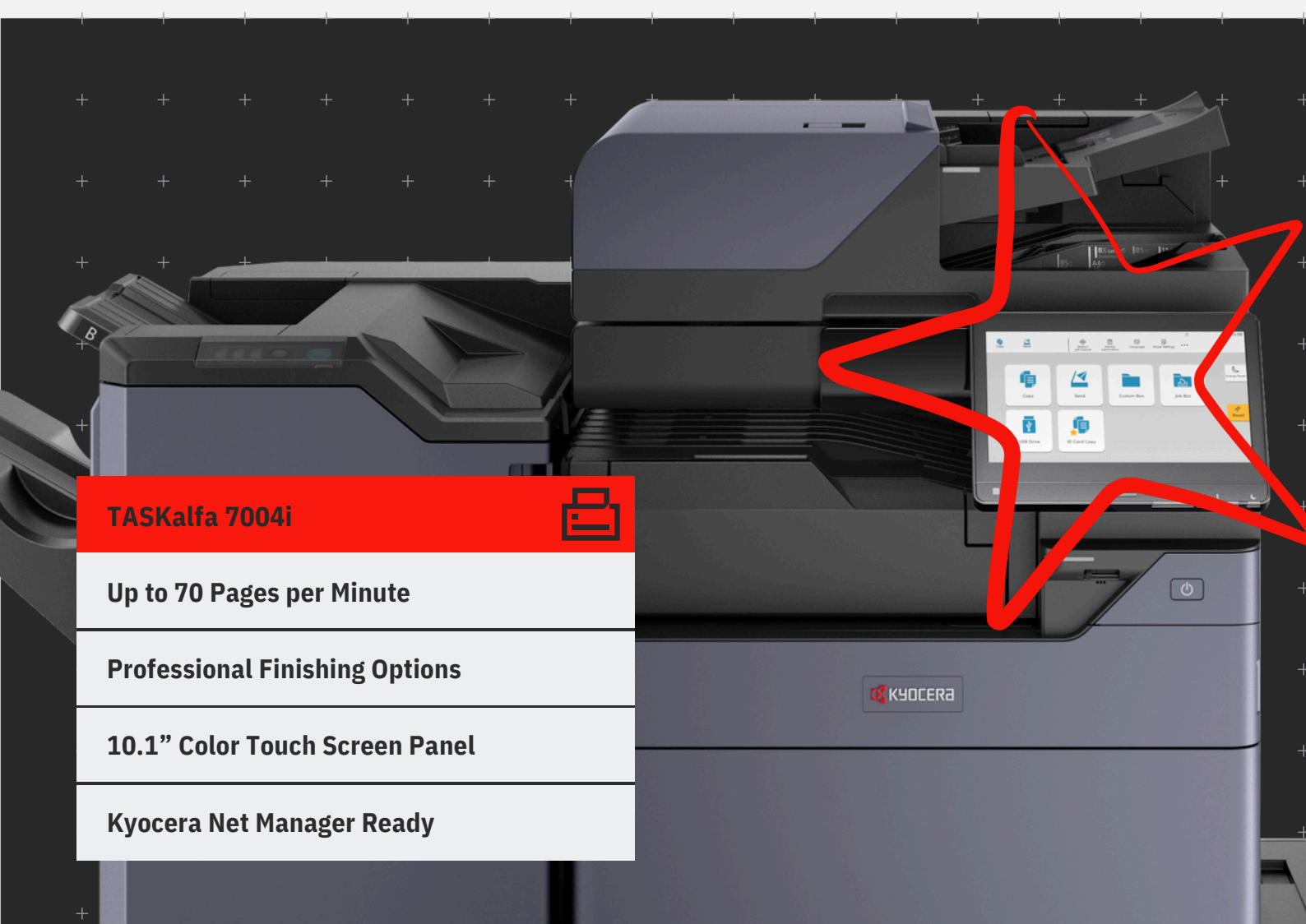
MFP
TELECOMS & COPIERS

kyoceradocumentsolutions.us



Your Workplace Evolution

These monochrome additions to the Kyocera Evolution Series are designed to keep your costs low and your efficiency at its highest. With the latest security compliance, rapid print and scan speeds, and a more engaging user experience, they will optimize your workflows and maximize productivity. Join the Evolution today and keep your business at the cutting edge!



TASKalfa 7004i



Up to 70 Pages per Minute

Professional Finishing Options

10.1" Color Touch Screen Panel

Kyocera Net Manager Ready

TASKalfa 7004i

BASIC SPECIFICATIONS

Configuration: BW MFP - Print/Scan/Copy/Optional Fax
Speed: Letter: 70 ppm, Legal: 42 ppm, Ledger: 35 ppm (print only)
Warm Up Time: 17 seconds or less (power on)
First Page Out:
Copy: 3.4 seconds
Print: 3.7 seconds
Display: 10.1" Color Touch Screen Control Panel
Memory/Hard Disk Drive: 4GB RAM/32GB SSD/320GB HDD Standard, 1TB HDD (option)
Duplex: Standard Stackless Duplex supports Statement (5.5" x 8.5") to Ledger (12" x 18"), 16 lb. Bond - 142 lb. Index (60 - 256gsm)
Standard Output Tray: Statement - 12" x 18"/500-sheets; up to 12" x 48" Banner (single sheet)
Electrical Requirements: 120V, 60Hz, 12A; 220-240V, 50/60Hz, 7.2A
Typical Electricity Consumption (TEC): 120V: .98 kWh/week; 220V: .95 kWh/week
Dimensions: 23.7" W x 26.1" D x 31.1" H
Weight: 182 lbs
Maximum Monthly Duty Cycle: 250,000 Pages per Month

PAPER SUPPLY

Paper Capacity: Standard 1,150-sheets; Maximum 7,150-sheets
Standard Paper Sources: Dual 500-sheet Trays, 150-sheet MPT, Auto Selection/Switching
Standard Paper Size:
Tray 1 - 5.5" x 8.5" - 8.5" x 14" (statement to legal)
Tray 2 - 5.5" x 8.5" - 12" x 18", Custom Size
MPT: 5.5" x 8.5" - 12" x 18" (multiple); to 12" x 48" Banner (single)

Optional Paper Sources:

PF-7140 Dual 500-sheet Tray Option - 5.5" x 8.5" - 12" x 18"
PF-7150 Dual 1,500-sheet Tray Option - 8.5" x 11"
PF-7120 3,000-sheet Large Capacity Tray Option - 8.5" x 11"

Paper Weight:

Trays/MPT: 14 lb. Bond - 166 lb. Index (52 - 300gsm)
Input Materials: Standard/Optional Trays: Plain, Bond, Recycled, Preprinted, Vellum, Color, Pre-Punched, Thick, Thin, High Quality, Letterhead, Envelope, Custom; MPT: Plain, Bond, Recycled, Preprinted, Vellum, Color, Pre-Punched, Thick, Thin, High Quality, Transparency (OHP), Coated, Index Tab, Label, Letterhead, Envelope, Custom

SECURITY SPECIFICATIONS Local Authentication, Network Authentication, Encryption Communication (IPsec, HTTPS, TLS 1.3, LDAPS, SMTP/POP/FTPS over TLS, SNMPv3), TPM chipset (Trusted Platform Module), S/MIME, SCEP (auto certificate issuance/renewal), OCSP/CRL (certificate validation), Secure Boot (firmware authenticity verification), Run Time Integrity Check, Data Security Kit 10 enhances IPsec communication (support for FIPS 140-2), HDD and Memory Overwrite (7x) Mode and HDD Data Encryption (256 bit), Common Criteria (ISO/IEC-15408/ EAL2), IEEE 2600.2

PRINT SPECIFICATION Standard Controller: ARM Cortex-A53/1.6GHz **PDLs/Emulations:** PRESCRIBE, PCL6 (PCL-XL/PCL-5e), KPDL3 (PS3), XPS, OPEN XPS, PDF; Optional (UG 34): IBM ProPrinter, Line Printer, LQ-850 **Print Resolution:** Up to 4800 x 1200 dpi **Fonts:** KPDL3, PCL6, Bitmap **OS Compatibility:** Windows: 8.1/10/Server 2012/ Server 2012 R2/Server 2016/Server 2019; Mac OS X v10.0 or later; Chrome OS **Mobile Printing:** Apple AirPrint®, Mopria®, KYOCERA Mobile Print, KYOCERA MyPanel **Interfaces:** Standard: 1000 Base-T/100-Base-Tx/10BASE-T

(IPv6, IPv4, IPsec), 802.3az ready, High-Speed USB 3.0, 4 USB 2.0 Host Interfaces, 2 Expansion Slots, IEEE 802.11b/g/n Wireless LAN (supports up to 98.5 feet); Optional: IEEE 802.11a/b/g/n/ac (**IB-37** for 2.4/5GHz), 10/100/1000BaseTX (**IB-50** for Dual NIC); IEEE 802.11b/g/n (**IB-51** for Wireless LAN Interface (supports up to 328.1 feet))
Network Print and Supported Protocols: HTTPS, FTPS, SNMP v1/v2c/v3, Raw Port (Port 9100) TCP/IP, IPv4, IPv6, DHCP LPR, DNS, WSD Scan/Print
Drivers: KX Driver, PCL Mini Driver, KPDL Mini Driver, Network Fax Driver, TWAIN Driver, WIA Driver, Status Monitor, Common Profile, Output to PDF, Security Watermark, Super Resolution, Color Optimizer, MAC Driver, Chrome Print Driver, Linux Driver, KX Driver with Distributed Printing, Windows Inbox Driver, SANE Driver
Utilities: KYOCERA Net Viewer, KYOCERA Net Device Manager, Quick Setup, KX PRESCRIBE Macro Generator, ID Register, Software Management Service, Upgrade Studio, Web Package Maker, Removal Tool, Wi-Fi Setup Tool, PDF Direct Print, Command Center RX; Kyocera Net Manager (option)

SCAN SPECIFICATION

Scan Type: Color and Black & White Scanner
Scan Resolution: 600/400/300/200 dpi, 200 x 100 dpi, 200 x 400 dpi
File Formats: TIFF, JPEG, XPS, OpenXPS, PDF/A-2.0 (MMR/JPG Compression/High Compression PDF); Option: Scan Extension Kit Text Searchable PDF; MS Office File
Connectivity/Supported Protocols: 10 BASE-T/100 BASE-TX/1000 BASE-T (IPv6, IPv4, IPsec) TCP/IP, Hi-Speed USB 3.0
Scanning Functions: Scan-to-Folder (SMBv3), Scan-to-Email, Scan-to-FTPS over TLS, Scan-to-USB, PDF Digital Signatures, WSD Scan, DSM/SANE Scan, TWAIN Scan, Specified Color Removal, Border Erase, Preview
Original Size: Up to 11" x 17" (Glass)
Drivers: TWAIN/WIA/DSM-SANE Driver/WSD Scan

OPTIONAL DOCUMENT PROCESSORS2

Acceptable Originals: 5.5" x 8.5" - 11" x 17"

DP-7150: Reverse Auto Document Processor/140-sheets
Speed: Simplex: 80 ipm; Duplex: 48 ipm (BW/Color)
Weight: Simplex: 13 lb. Bond - 90 lb. Index (35 - 160gsm)
Duplex: 16 lb. - 32 lb. Bond (50 - 120gsm)

DP-7160 (with multi-feed detection):

Dual Scan Document Processor/320-sheets
Speed: Simplex: 137 ipm; Duplex: 274 ipm (BW/Color)
Weights: Simplex: 13 lb. Bond - 120 lb. Index (35 - 220gsm)
Duplex: 16 lb. - 120 lb. Index (50 - 220gsm)

DP-7170 (with multi-feed and staple detection):

Dual Scan Document Processor/320-sheets
Speed: Simplex: 137 ipm; Duplex: 274 ipm (BW/Color)
Weights: Simplex: 13 lb. Bond - 120 lb. Index (35 - 220gsm)
Duplex: 16 lb. - 120 lb. Index (50 - 220gsm)

COPY SPECIFICATIONS

Copy Resolution: 600 x 600 dpi
Image Mode: Text, Photo, Text/Photo, Graphic/Map
Continuous Copy: 1 - 9,999
Additional Features: Auto Magnification, Auto Paper Select, Combine Copy, Mirror Image, Rotate Copy, Border Erase, Split Copy, Margin Shift, Page Number, Form Overlay, Blank Page Skip, Specified Color Removal, Proof Copy, Preview, ID Card Copy
Job Management: 1,000 User Codes, Job Build, Shortcut Keys, Repeat Copy
Magnification/Zoom: Full Size, 4 Reduction, 4 Enlargement Preset Ratios, 25 - 400% in 1% Step Increments
Document Box: Custom/Job/USB Drive Box, Fax Box (w/option)

OPTIONAL FAX SPECIFICATIONS

Fax Type: Fax System 12 (option)
Type/Data Compression: G3 Fax/MMR, MR, MH, JBIG
Transmission Speed/Modem Speed: Less than 3 seconds/33.6 Kbps
Fax Memory: Standard 170 MB
Driver: Network Fax Driver
Fax Functions: Network Fax, Duplex Transmission and Reception, Encrypted Transmission and Reception, Polling Transmission and Reception, Broadcast, Fax Server Integration, Fax Dedicated Paper Feed Tray, Fax Forwarding to email or file

SOLUTIONS AND SERVICES

Remote Management

Kyocera Fleet Services ready! A highly secure cloud-based monitoring solution that offers real-time visibility into your fleet. Optimize device uptime and be notified when to replenish supplies. Streamline billing with seamless 3rd party application integration, allowing you to focus solely on your business.

Printing Software

Cost Control & Security
Cloud & Mobile
Printer Management

Content Services

Scan & Connect
Intelligent Process Automation
Enterprise Content Management

IT Solutions

Technology Solutions
Including solutions for Cloud and Data Centers
Network Infrastructure
Cybersecurity Solutions
Collaboration Solutions

Consulting Services

Including IT Health Check
CIO as a Service
Healthcare Compliance
Backup and Recovery Planning

Professional Services

Including Design and Architecture
Project Implementation
Project Management

Managed Services

Including Help Desk Services
Retainer Services and On-site Support

MFP
TELECOMS & COPIERS

KYOCERA
Document Solutions

Output & Finishing Options3

OPTIONAL 250 SHEET INNER SHIFT TRAY JS-7110

Stack Capacity: 250-sheets
Paper Size: 8.5" x 11" - 11" x 17"
Paper Weight: 14 lb. Bond - 166 lb. Index (52 - 300gsm)

OPTIONAL 1,000 SHEET FINISHER DF-71204

Stack/Staple Capacity: Main Tray: 1,000-sheets/50-sheets (up to 24 lb. Bond [90gsm])
Paper Size: 5.5" x 8.5" - 12" x 18"
Paper Weight: 14 lb. Bond - 166 lb. Index (52 - 300gsm)
Edge Staple Position: 3 Positions: Top Left, Bottom Left, Center Bind
Optional Punch: PH-7A 2/3 Hole Punch Unit, supports 5.5" x 8.5" - 12" x 18"; 14 lb. Bond - 166 lb. Index
Dimensions: 21.6" W x 24.4" D x 41.3" H

OPTIONAL 4,000 SHEET FINISHER DF-71404

Stack/Staple Capacity: Main Tray (A): 4,000-sheets; Sub Tray (B): 200-sheets/65-sheets (up to 20 lb. Bond [80gsm])
Paper Size: 5.5" x 8.5" - 12" x 18"
Paper Weight: 14 lb. Bond - 166 lb. Index (52 - 300gsm)
Edge Staple Position: 3 Positions: Top Left, Bottom Left, Center Bind
Optional Punch: PH-7A 2/3 Hole Punch Unit, supports 5.5" x 8.5" - 12" x 18"; 14 lb. Bond - 166 lb. Index
Dimensions: 29" W x 26" D x 42" H
Optional Booklet Folder/Trifold Unit BF-730: (DF-7140)
Booklet Folder: supports 8.5" x 11", 8.5" x 14", 11" x 17"
Fold Booklet (staple): 16 lb. - 24 lb. Bond (60 - 90gsm) 20-sheets; 25 lb. - 28 lb. Bond (91 - 105gsm) 13-sheets; Higher than 28 lb. Bond (Higher than 105 gsm) 1-sheet
Fold Booklet (no staple): 16 lb. - 24 lb. Bond (60 - 90gsm) 5-sheets; 25 lb. Bond - 72 lb. Index (91 - 120gsm) 3-sheets; 32 lb. Bond - 110 lb. Cover (121 - 256gsm) 1-sheet
Trifold: supports 8.5" x 11" only; 16 lb. - 24 lb. Bond (60 - 90gsm) 5-sheets; 25 lb. Bond - 72 lb. Index (91 - 120gsm) 3-sheets

Optional Multi-Bin Mailbox MT-730(B): (DF-7140) 7 Trays; supports: 16 lb. Bond - 90 lb. Index (60 - 163gsm); Stack Capacity per bin: 100-sheets: 5.5" x 8.5", 8.5" x 11"; 50-sheets: 8.5" x 14", 11" x 17"

OPTIONAL 4,000 SHEET FINISHER DF-71504

Stack/Staple Capacity: Main Tray (A): 4,000-sheets; Sub Tray (B): 200-sheets/100-sheets (up to 20 lb. Bond [80gsm])
Paper Size: 5.5" x 8.5" - 12" x 18"
Paper Weight: 14 lb. Bond - 166 lb. Index (52 - 300gsm)
Edge Staple Position: 3 Positions: Top Left, Bottom Left, Center Bind
Optional Punch: PH-7A 2/3 Hole Punch Unit, supports 5.5" x 8.5" - 12" x 18"; 14 lb. Bond - 166 lb. Index
Dimensions: 29" W x 26" D x 42" H

Optional Booklet Folder/Trifold Unit BF-9100: (DF-7150)

Booklet Folder: supports 8.5" x 11", 8.5" x 14", 11" x 17"
Fold Booklet (staple): 14 lb. - 24 lb. Bond (52 - 90gsm) 20-sheets; 25 lb. - 28 lb. Bond (91 - 105gsm) 13-sheets; Higher than 28 lb. Bond (Higher than 105 gsm) 1-sheet
Fold Booklet (no staple): 14 lb. - 24 lb. Bond (52 - 90gsm) 5-sheets; 24 lb. Bond - 28 lb. Index (91 - 105gsm) 3-sheets; 28 lb. Bond - 140 lb. Index (106 - 256gsm) 1-sheet
Trifold: supports 8.5" x 11" only; 14 lb. - 24 lb. Bond (52 - 90gsm) 5-sheets; 25 lb. Bond - 28 lb. Index (91 - 105gsm) 3-sheets

OPTIONAL INSERTER UNIT IS-7100

Paper Capacity: 250-sheets x 2 Trays (based on 20 lb. Bond [80gsm])
Function: Feeds Front, Back Covers or Sheet Insertion
Paper Size: 5.5" x 8.5" - 12" x 18"
Paper Weight: 14 lb. Bond - 166 lb. Index (52 - 300gsm)
Dimensions: 27.6" W x 24.2" D x 52.4" H

OPTIONAL Z-FOLD UNIT ZF-71005

Supported: Z-Fold: 1-sheet folded (18 - 28 lb. Bond [64 - 105gsm]) **Bi-Fold:** 1-sheet folded (18 - 28 lb. Bond [64 - 105gsm]) **Inner/Outer Trifold:** (based on 8.5" x 11R) 3-sheets (up to 20 lb. Bond [64 - 74gsm]) 2-sheets (up to 24 lb. Bond [70 - 90gsm]) 1-sheet (up to 28 lb. Bond [91 - 105gsm]) 1-sheet (for all other sized sheets) **Paper Sizes Supported: Z-Fold:** 8.5" x 11R - 11" x 17" **Bi-Fold:** 8.5" x 11" - 12" x 18" **Trifold:** 8.5" x 11" - 11" x 17" **Dimensions:** 8.2" W x 28.7" D x 38.5" H

ADDITIONAL OPTIONS AK-7110

Bridge Unit Attachment Kit, AK-7120 Bridge Unit Attachment Kit (ZF-7100), JS-7100 Job Separator, HD-16 Large Capacity HDD (1TB), Banner Guide 10, Internet Fax Kit (A), Card Authentication Kit (B), Data Security Kit 10, Dual NIC (IB-50), Extended Range Wireless LAN NIC (IB-51), Thin Print option (UG-33), Printer Emulation option (UG-34), DT-730(B) Document Tray, Scan Extension Kit (A) for Text Searchable PDF; MS Office File, Keyboard Holder 10, Numeric Keypad (NK-7130), Cabinet Stand

- 1 Requires PF-7140
- 2 Only 1 Document Processor can be installed
- 3 Only 1 Output Option can be installed
- 4 Requires Bridge Unit Attachment Kit (AK-7110)
- 5 Requires Bridge Unit Attachment Kit (AK-7120)

Specifications and design are subject to change without notice. For the latest on connectivity visit kyoceradocumentsolutions.us. TASKalfa, PRESCRIBE, Kyocera Net Manager, Kyocera Net Viewer, Kyocera Device Manager, PDF Direct Print, Command Center RX, and KX Driver are trademarks of The Kyocera Companies. Mac OS and AirPrint are trademarks of Apple, Inc. Windows is a trademark of Microsoft, Inc. All other trademarks are the property of their respective owners.



Kyocera Document Solutions Partner

KYOCERA Document Solutions America
 225 Sand Road, PO Box 40008
 Fairfield, New Jersey 07004-0008, USA
 Tel: 973-808-8444

